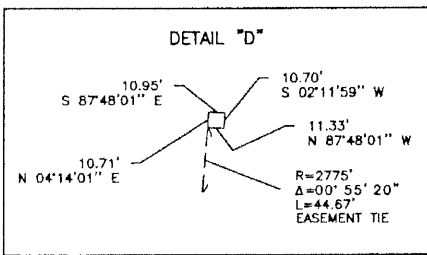
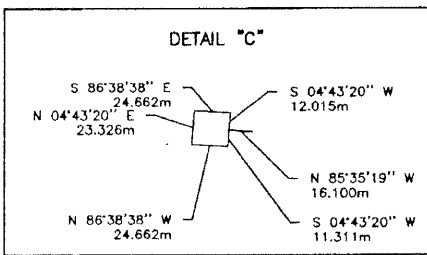
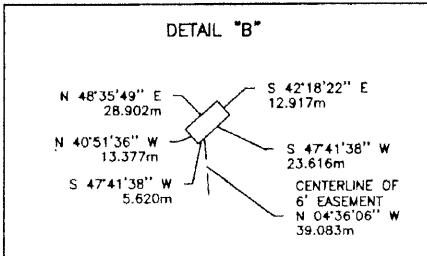
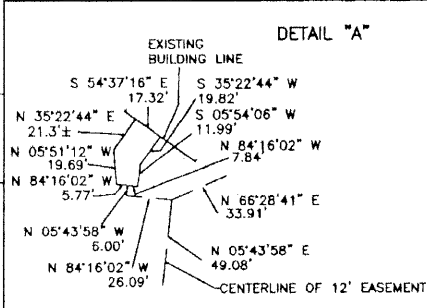
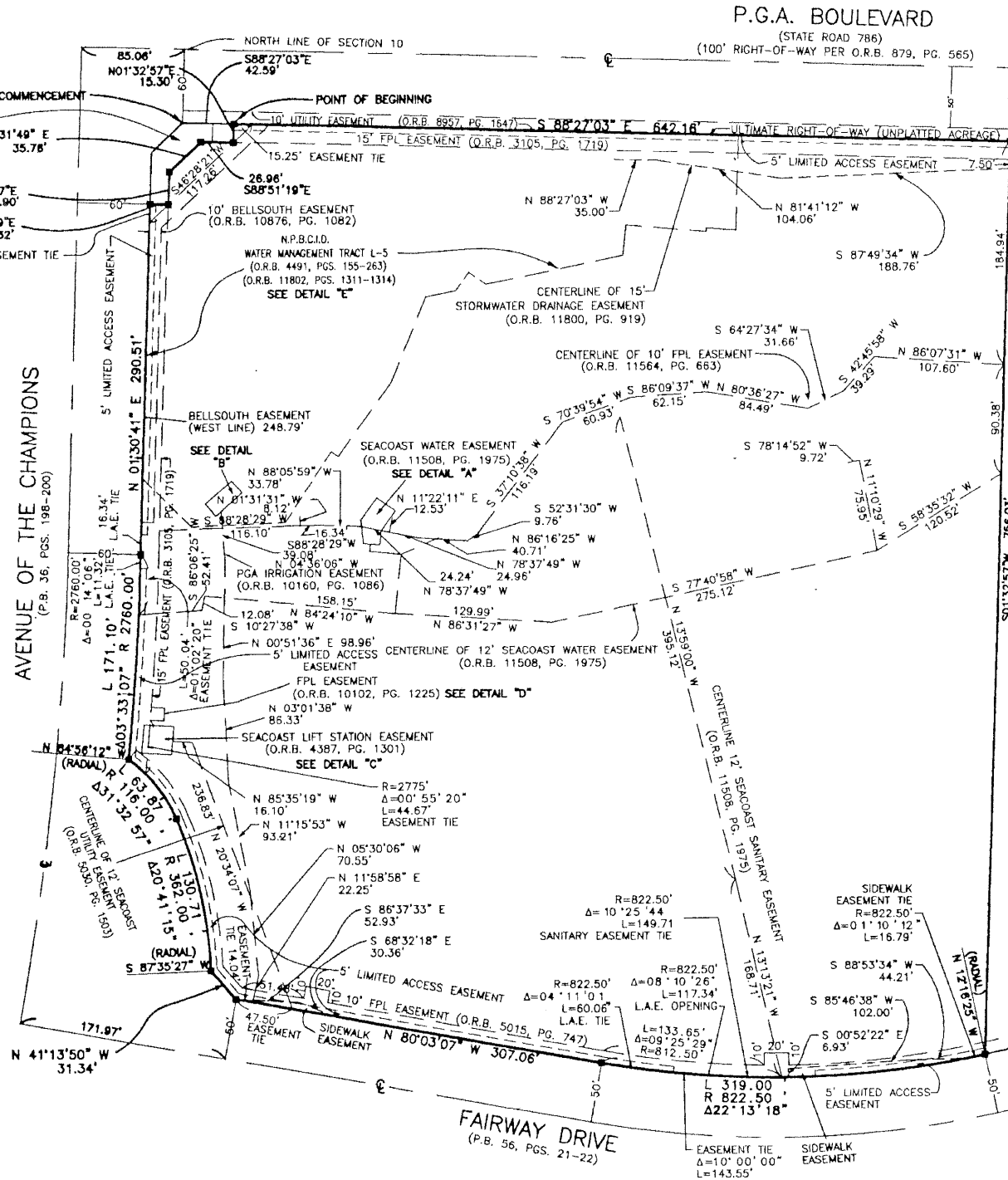
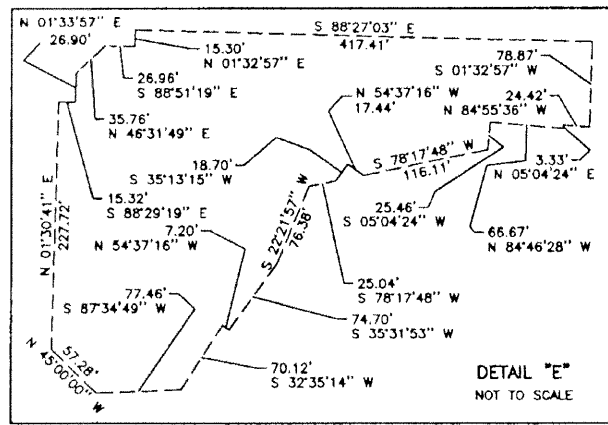
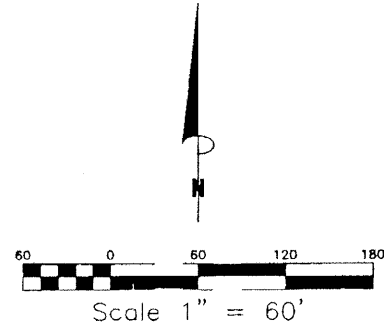


PLAT OF Fairway Office Center

LYING IN SECTION 10, TOWNSHIP 42 SOUTH, RANGE 42 EAST
CITY OF PALM BEACH GARDENS, PALM BEACH COUNTY, FLORIDA
SEPTEMBER 2000



NOTES:
1. □ DENOTES PERMANENT REFERENCE MONUMENT (P.R.M.) LS 4133 SET, AS REFERENCED IN DESCRIPTION, BEARING S 88°27'03" E
2. WHERE UTILITY AND DRAINAGE EASEMENTS CROSS, DRAINAGE EASEMENTS SHALL TAKE PRECEDENCE.
3. ABBREVIATIONS:
C = CENTERLINE
O.R.B. = OFFICIAL RECORDS BOOK
PG. = PAGE
F.P.L. = FLORIDA POWER AND LIGHT CO.
P.R.M. = PERMANENT REFERENCE MONUMENT
L.A.E. = LIMITED ACCESS EASEMENT
Δ = CENTRAL (DELTA) ANGLE
FND = FOUND
CONC. MON. = CONCRETE MONUMENT
N.P.B.C.I.D. = NORTHERN PALM BEACH COUNTY IMPROVEMENT DISTRICT

PREPARED BY ROBERT P. BLASZYK, PSM, IN THE OFFICES OF
RPB Consulting, Inc.
Land Surveying and Mapping, L.B. No. 7022
11211 Prosperity Farms Road, Suite C-301, Palm Beach Gardens, Florida 33410
Phone (561) 627-2245 Fax (561) 624-1569